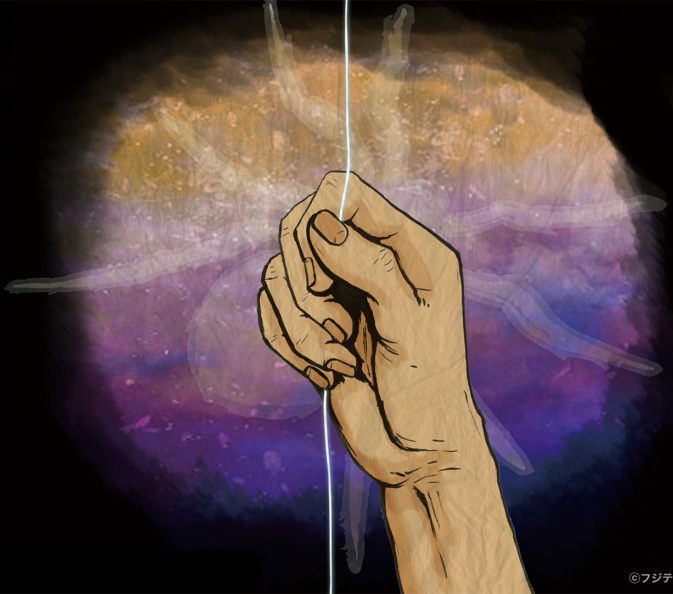


蜘蛛の糸

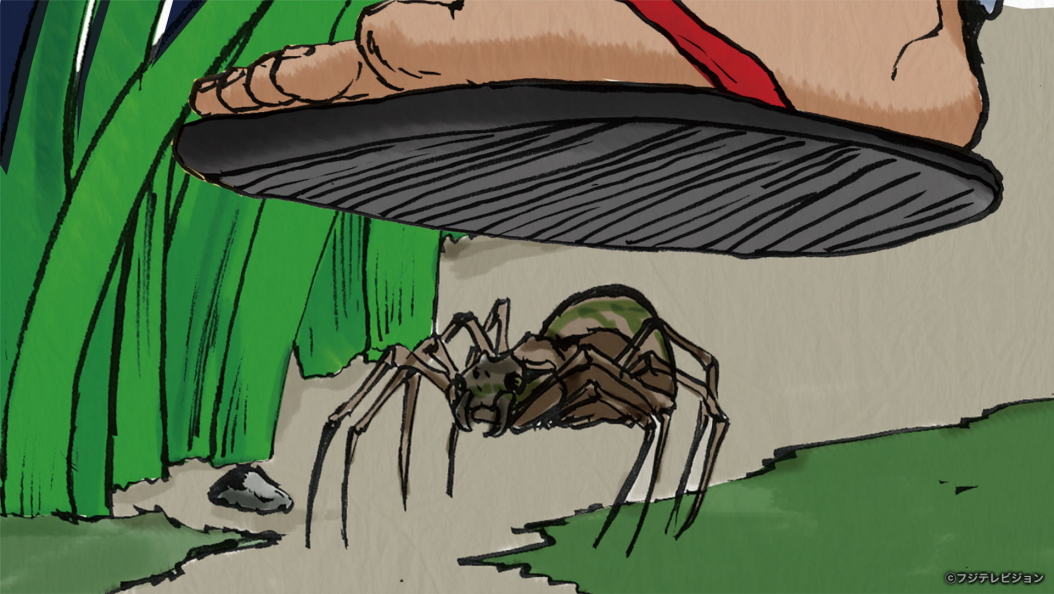






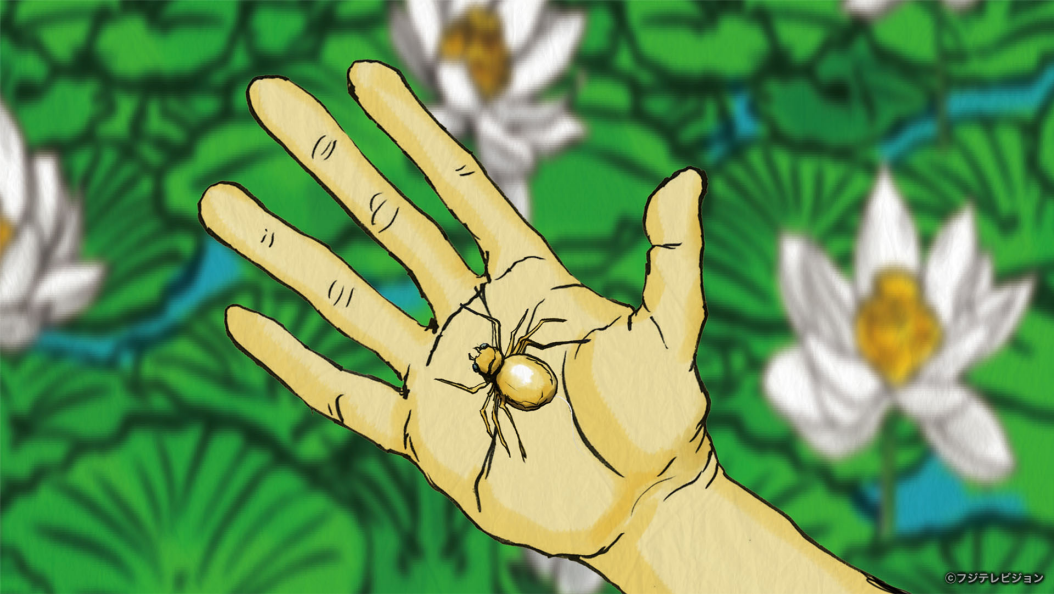


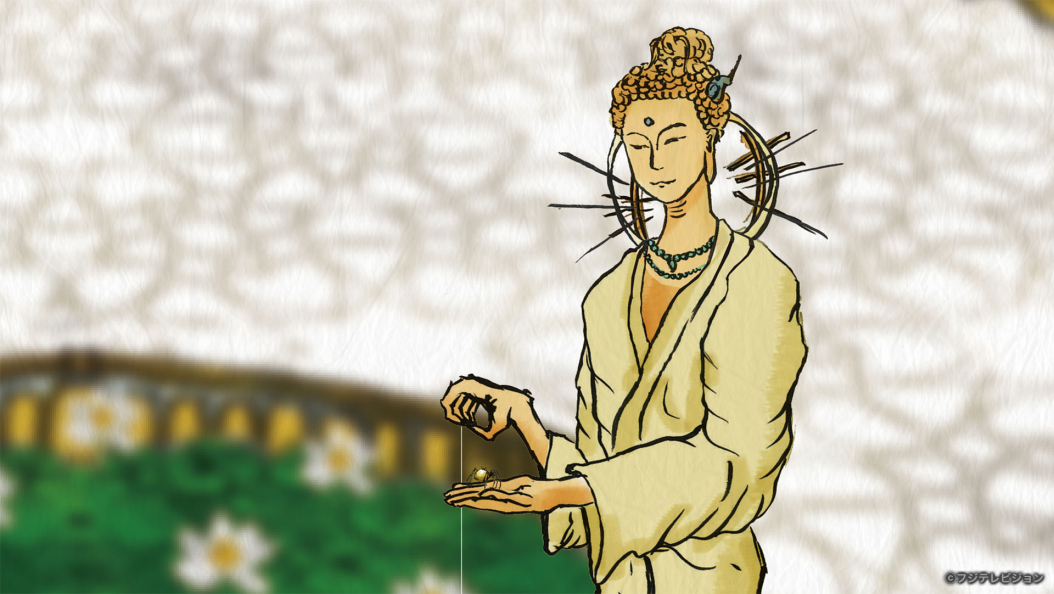




























Handwritten Arabic calligraphy in a circular arrangement, likely a religious or poetic inscription. The text is written in a fluid, cursive style (Thuluth or similar) and is surrounded by decorative dots and flourishes. The central text is arranged in a circular pattern, with some words appearing to be "Bismillah" (In the name of Allah, the Most Gracious, the Most Merciful) at the top, followed by "Ar-Rahman" and "Ar-Rahim". The rest of the text is more difficult to decipher due to the cursive style and the circular arrangement.



